



GEMINI G-5040

Gemini G-5040, the modular bi-optic solution

The Scantech Gemini is the high performance bi-optic scanner designed for the high throughput checkout environment. With its modular concept the Gemini achieves a highly flexible and cost effective solution. A great advantage of the modularity is the continuous scanning capability, better known as down-time zero. In the unlikely event of a scanner failure, the other scanner will continue to function independently, keeping the checkout open and the customer satisfied. The Gemini is ideally suited for hypermarkets, supermarkets and discounters. Follow the footsteps of some of the leading retailers and experience the advantages of a modular bi-optic scanner.

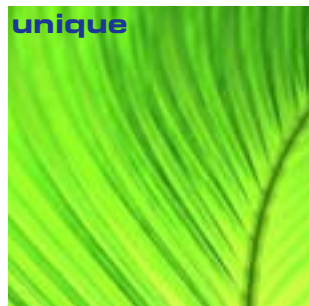
transparent



solid



unique



General information

The Scantech Gemini is a unique modular bi-optic solution. With the guarantee of two fully optimised fly-by scan patterns, the Gemini combines the best out of two worlds: The Pollux P-4010 for vertical scanning and the Castor C-5010 for horizontal scanning.

Designed from a retailers point of view, the Gemini dual plane scanning solution offers a number of benefits, including: reduced operator fatigue, increased productivity, a reduction in checkout time and improved customer service.

Upgradability

Many retailers who already use the Pollux P-4010 or the Castor C-5010 scanner can improve their throughput at the checkout with the addition of either a Pollux or Castor, hereby protecting their former investment. No need to buy a new bi-optic scanner, just upgrade your current solution!

Reading of damaged bar codes

Thanks to the specially developed STAR software, the Gemini can easily read truncated, damaged and sub-standard bar codes. The special code stitching intelligence enables the Gemini to reconstruct the damaged code.

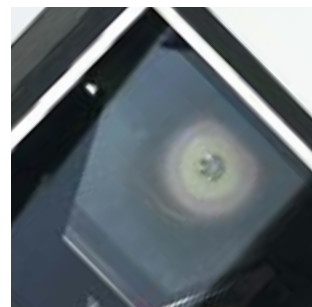
Ergonomics

The Gemini gives you the opportunity to install the scanners completely adjusted to your cashier's workspace ensuring the best ergonomic checkout environment. Furthermore, the Gemini is the flattest bi-optic solution meeting every country specific ergonomic requirement.

GEMINI G-5040

specifications

Physical depth: 70 mm • width: 210 mm length: 183 mm • weight: 1,2 kg // depth: 75 mm • width: 205 mm length: 240 mm • weight: 2,5 kg **Dual interfaces** RS232C - OCIA • IBM RS485 - KBW **Electrical** power supply voltage: 100 - 240 V ac, 50/60 Hz **Optical** light source: visible laser diode 670 nm 10 scan directions, 35 lines scan pattern • scan rate: 3500 scans/second • depth of scan field: 300 mm **Operating environment** 0°C to 40°C • relative humidity to 95% (non-condensing) **Supported codes** EAN/UPC/JAN including AddOn • code 128 • EAN 128 • code 39 • code 32 • codabar • interleaved 2/5 **Compatibility** EAS compatible



SCANTECH ID

Scantech-ID BV

Vertrieb Schweiz

ADES
Ruchstuckstrasse 12
Tel +41 (0)1 835 20 60
Fax +41 (0)1 835 20 69
info@ades.ch
www.scantech-id.ch

Safety

The Gemini G-5040 complies with:

- laser safety IEC 825-1 (1993) Class I, U.S. 21CFR1040 Class IIa
- electrical safety EN 60950 (second edition), UL1950 (third edition), c-UL (according CSA22.2.950-95)
- radio and tv interference EN 55022 Class B // Class A (1994), FCC part 15 Class A (1992)
- radio frequency immunity EN 50082-1 (1992)
- harmonic current emissions EN 61000-3-2 (1995)



Specifications may change without prior notice.