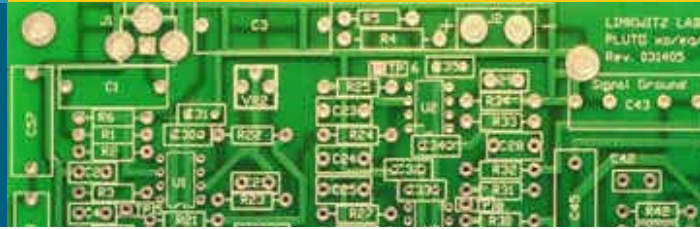
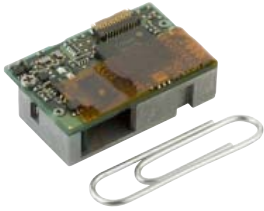


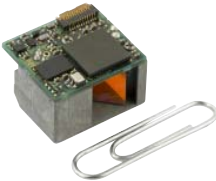
# OEM



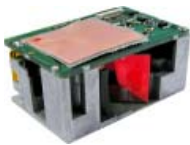
## 1D Decoded



**MDL 1000 (Gold/Tin)**  
 Scan engine: Barcode laser scanner  
 Scan rate: 100 scans/sec  
 Scan range:  
 ca. 50 - 650 mm / 1.97 - 25.59 in  
 W 28 mm / 1.10 in  
 D 18 mm / 0.71 in  
 H 7.8 mm / 0.31 in  
 Weight: ca. 10 g / 0.35 oz  
 Connector: gold or tin

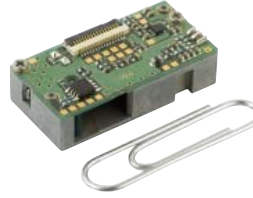


**MDL 2000 (Gold/Tin)**  
 Scan engine: Barcode laser scanner  
 Scan rate: 100 scans/sec  
 Scan range:  
 ca. 50 - 650 mm / 1.97 - 25.59 in  
 W 20.4 mm / 0.79 in  
 D 18 mm / 0.71 in  
 H 11.2 mm / 0.44 in  
 Weight: ca. 4.7 g / 0.17 oz  
 Connector: gold or tin



**MDL 3200**  
 Scan engine: Barcode laser scanner  
 Scan rate: 100 scans/sec  
 Scan range:  
 ca. 460 - 2700 mm / 18.11 - 106.30 in  
 W 38.4 mm / 1.51 in  
 D 25.4 mm / 1.00 in  
 H 19.3 mm / 0.76 in  
 Weight: ca. 16 g / 0.56 oz

## 1D Undecoded



**MSL 1000 (Gold/Tin)**  
 Scan engine: Barcode laser scanner  
 Scan rate: 100 scans/sec  
 Scan range:  
 ca. 50 - 650 mm / 1.97 - 25.59 in  
 W 28 mm / 1.10 in  
 D 14 mm / 0.55 in  
 H 7.8 mm / 0.31 in  
 Weight: ca. 10 g / 0.35 oz  
 Connector: gold or tin



**MSL 2000 (Gold/Tin)**  
 Scan engine: Barcode laser scanner  
 Scan rate: 100 scans/sec  
 Scan range:  
 ca. 50 - 650 mm / 1.97 - 25.59 in  
 W 20.4 mm / 0.79 in  
 D 14 mm / 0.71 in  
 H 11 mm / 0.43 in  
 Weight: ca. 3.9 g / 0.14 oz  
 Connector: gold or tin



**VLM 5200**  
 Scan engine: Barcode laser scanner  
 Scan rate: 100 scans/sec  
 Scan range:  
 ca. 460 - 2700 mm / 18.11 - 106.30 in  
 W 38.4 mm / 1.51 in  
 D 25.4 mm / 1.00 in  
 H 19.3 mm / 0.76 in  
 Weight: ca. 15 g / 0.53 oz

## 2D CMOS



**MDI 1000**  
 Scan engine: 2D Imager  
 Scan rate: up to 30 fps  
 Scan range:  
 ca. 50 - 300 mm / 1.97 - 11.81 in  
 W CMOS 21.5 mm / 0.85 in,  
 PCB 25.3 mm / 1.00 in  
 D CMOS 13.5 mm / 0.53 in,  
 PCB 39 mm / 1.54 in  
 H CMOS 11.8 mm / 0.46 in,  
 PCB 4.2 mm / 0.17 in  
 Weight: CMOS ca. 3.9 g / 0.14 oz,  
 PCB ca. 3.8 g / 0.13 oz

**FPC Flatcable**  
 for use on MDI 1000  
**short** L 49 mm / 1.93 in  
**long** L 69 mm / 2.72 in

## Development Kit



**MEK 1000 kit:**  
 Package contains:  
 Development board  
 Getting started disc  
 Connection cable for MDL series  
 Connection cable for MDI 1000  
 RS232 cable

**Powersupply**  
 For use with MEK 1000 kit:  
 Universal powersupply 6V