


Dolphin® EZConfig Suite

Dolphin EZConfig is a suite of software utilities that simplifies configuration management of Dolphin devices. Device configuration data is stored in configuration files that use a custom XML format (.exm extension ). EZConfig Suite manages and deploys these files to Dolphin devices.

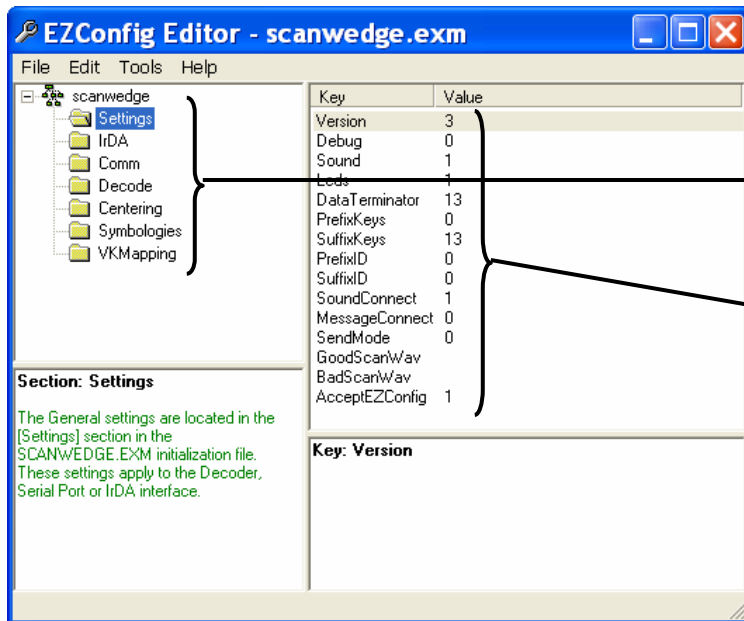
With EZConfig, you can create a configuration file, then deploy it to all the devices you manage without having to touch every device, ensuring that each device has the same default configuration.

EZConfig Suite is comprised of the following components:

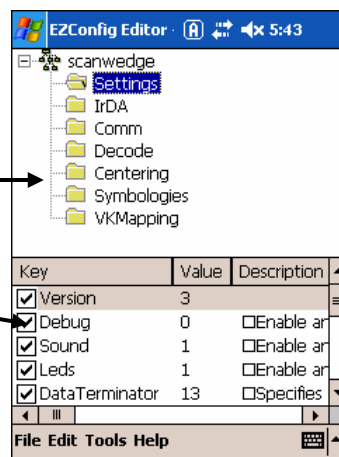
EZConfig Editor – a utility on both the PC and the device that displays configuration files in an easy-to-read, easy-to-edit format. EZConfig Editor on the PC creates bar codes from configuration files for quick-scan deployment or saves configuration files directly to the device via Microsoft® ActiveSync®.

EZConfig Client – a utility on the device that decodes EZConfig bar codes and deploys the configuration data in the device.

EZConfig Editor on the PC



EZConfig Editor on the Device



Both editors provide quick access to configuration information and make updating, managing, and deploying configuration files quick and easy.

Device Configuration Management

With EZConfig Suite, device configuration information is stored in configuration files that can be distributed to multiple devices at the same time. This centralizes device configuration and ensures the same configuration—without having to touch every device!

Configuration files can contain:

- Radio settings for 802.11b, Bluetooth™, and GSM/GPRS radios.
- WLAN, WWAN, and WPAN configurations, including network hardware such as printers and access points.
- Power management settings, including battery and external power timeouts, backlight behavior, and power out parameters.
- Registry settings.
- Configuration information for Power Tools and Demos.
- Custom application window settings.
- Full text descriptions of sections and keys.
- Command lines to launch applications.
- Command line arguments that apply launch settings.

Enforcing Defaults

Once deployed to the device, configuration settings are stored in persistent memory and applied automatically after each cold boot. This means that you can control the default configuration of devices in the field without relying on users for setup. Furthermore, you can use a quick cold boot to restore default settings after a user has corrupted the device by incorrectly altering the device configuration.

Updating the Registry

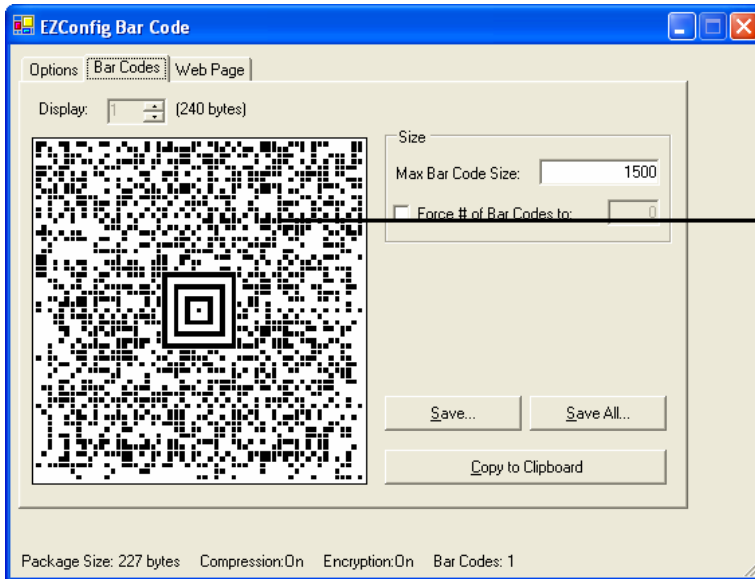
EZConfig Suite creates registry documents in the .exm file format. If you have applications or workflows that require new or different registry entries, you can create a small registry document in EZConfig Editor that contains the required settings, then deploy the file to the device via bar code. When scanned, EZConfig Client updates the registry immediately and your user can start working.

Bar Code Deployment

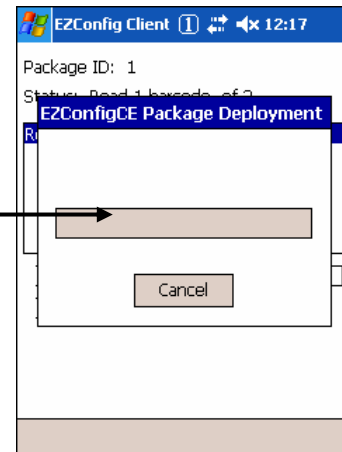
Bar code deployment means that devices can be configured just by scanning bar codes. You don't need to connect the device to a PC or network to deploy configuration information. In fact, you can even configure the device to operate on a network by scanning a bar code.

EZConfig Editor on the PC embeds configuration files in bar code packages that are decoded and deployed by EZConfig Client on the device.

Bar Code Creation in EZConfig Editor



Deployment by EZConfig Client



For maximum ease-of-use in the field, bar codes can be printed and posted where users work. Users update their devices with a quick scan and keep working. If you are managing devices in remote locations, EZConfig Editor can save bar codes as graphic files that you can distribute electronically for users to print and scan.

EZConfig bar codes feature a temporary option that modifies the current device configuration without replacing the default configuration. You could configure the device to work on an in-premise network for an afternoon, for instance, then restore the default network settings with a cold boot when the afternoon is over.

Configuration Capabilities

EZConfig Suite stores the most important device configuration information in files that are

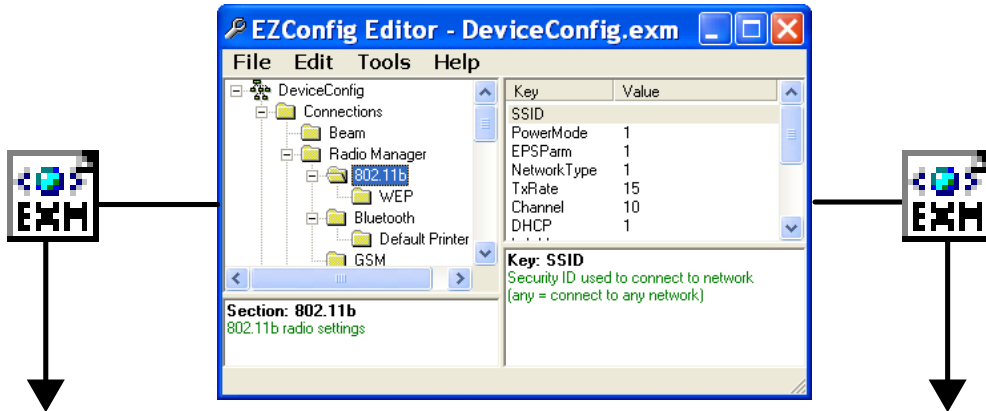
- Easy to read, modify, and deploy to multiple devices.
- Stored in persistent memory on the device.
- Deployable as bar codes.

EZConfig makes it possible to

- Switch the device from a WLAN to a WWAN configuration with nothing more than a bar code scan. Because the WWAN configuration information is embedded in the bar code, the user can begin working on the WWAN immediately without having to modify the device after the switch.
- Change or set up network printers in the field by posting a bar code on the printer. Users just scan the bar code and print.
- Store network printer information in persistent memory so you only have to configure the device to a printer once.
- Set the mechanical connector to power out temporarily, without changing the registry.

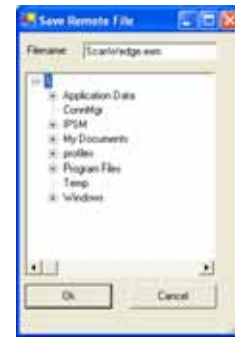
EZConfig Workflow

EZConfig Editor (PC): Enter settings in the configuration file.



Create a bar code package from the file.

Save the file directly to the device via ActiveSync.



Scan the bar code package.



EZConfig Client automatically

- Decodes the bar codes,
- Deploys the package, and
- Launches the associated application.

If necessary, launch the application on the device.

The settings are applied in the device.

EZConfig Suite Specifications

Compatible Mobile Computers

*All configurations of:

- Dolphin 9500 Series
- Dolphin 7900 Series

*To deploy configuration files via bar code, your Dolphin terminal must have an imager that can decode 2D bar codes.

Software Requirements

Desktop

- Microsoft® Windows® XP
- Microsoft® Windows® 2000
- Microsoft® Windows® NT
- Microsoft® .NET Framework 1.1 or higher
- Microsoft® ActiveSync® 3.7 or higher

Dolphin Devices

- Microsoft® Windows Mobile™ 2003 Second Edition Software for Pocket PCs

Upgrades

EZConfig installs as part of Dolphin Power Tools. Power Tools are updated regularly and the latest version can be downloaded to the PC from the web site: www.handheld.com.

Communication Requirements

A Microsoft® ActiveSync® connection between the device and a host PC is required to install EZConfig initially and to manually transfer configuration files to the device. Use one of the following Dolphin communication peripherals for ActiveSync communications:

- Dolphin® HomeBase™
- Dolphin® MobileBase
- Dolphin® Charge/Comm Cable

Windows and Microsoft are registered trademarks of Microsoft Corporation.
The Bluetooth trademarks are owned by Bluetooth SIG, Inc., U.S.A. and licensed to Hand Held Products.

Worldwide Offices

Offices Serving North America
Skaneateles Falls, NY
Tel: +1 315 685 8945
or, in North America: +1 800 582 4263
napresales@handheld.com
Charlotte, NC
Tel: +1 704 998 3998
or, in North America: +1 800 582 4263
napresales@handheld.com

Offices Serving Europe, Middle East, and Africa
Europe
Tel: +31 (0) 40 29 01 600
eupresales@handheld.com
United Kingdom
Tel: +44 (0) 1 925 240055
eupresales@handheld.com
Italy
Tel: +39 (0) 2 67 100752
eupresales@handheld.com

France
Tel: +33 (0) 1 41 158220
eupresales@handheld.com
Germany
Tel: +49 (0) 7 477 151377
eupresales@handheld.com
Spain
Tel: +34 93 228 78 68
eupresales@handheld.com

Offices Serving Asia and the Pacific Rim
Hong Kong
Tel: +852 2511 3050
appresales@handheld.com
Japan
Tel: +813 5770 6312
appresales@handheld.com
Shanghai
Tel: +86 21 6361 3818
appresales@handheld.com

Offices Serving Latin America
Naples, Florida
Tel: +1 239 263 7600
lapresales@handheld.com
São Paulo
Tel: +55 11 2178 0500
lapresales@handheld.com
Rio De Janeiro
Tel: +55 21 2178 0500
lapresales@handheld.com
Mexico
Tel: +52 55 5203 2100
lapresales@handheld.com

Web Site Address www.handheld.com
Hand Held Products, Inc., ("Hand Held Products")® 1999-2005. All rights reserved. Printed in the U.S.A.
Due to Hand Held Products' continuing product improvement programs, specifications and features herein are subject to change without notice.